

Rolling Stock

Repair and Replacement Programs

steris-ims.com | 1.800.783.9251

Distributed by

 **STERIS** *ims*
Instrument Management Services

IS YOUR ROLLING STOCK PROCEDURE READY?

- ▶ Rolling stock units out of service?
- ▶ Procedures delayed because of lack of carts?
- ▶ OSHA and other regulatory organizations knocking at your door?
- ▶ Loud, rattling carts impacting your patient experience scores?

STERIS IMS has the repair and replacement solutions to fit your facility's needs, including:

- ▶ OnLocation maintenance programs to help keep your rolling stock procedure ready
- ▶ Inventory inspections at no charge to ensure safe and proper functionality
- ▶ A full portfolio of high-quality, stainless steel medical equipment



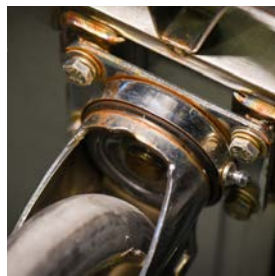
RUST & BIOBURDEN REGULATORY CITATION RISKS



Melted caster



Dirty cart with tape



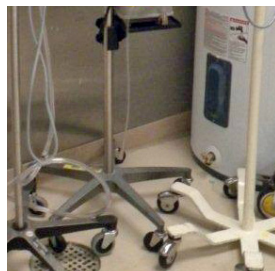
Rusty caster



Poor weld



Corroded caster



Broken IV stand lock

STERIS IMS provides solutions to keep your SPD and OR rolling with service or replacement for IV poles, mayo stands, and kick buckets.

Case Cart Repair

STERIS IMS can assist in preparing for regulatory audits and other inspections by helping you maintain the rolling stock in your facility. Our program includes the necessary documentation to help your facility comply with regulatory requirements while maximizing your equipment investment.

Services offered:

- Proactive maintenance
- Inventory management

Benefits include:

- Automatically scheduled routine maintenance
- Easily accessible service history through MyAccount

This program checks for:

- Damage to wheels, casters, handles, and bumpers
- Broken or missing parts
- Damaged welds
- Foreign objects in the wheels

Case cart, transport cart, and sterilizer cart repair services include:

- Aligning hinges and adjusting doors or installing new door hinges and latches
- Inspecting, cleaning, lubricating, and replacement of locking mechanism for casters
- Lubricating and re-welding of latches, hinges, and casters
- Welding of shelf racks and bars
- Bumper replacement
- Attaching clean/dirty indicators to existing inventory to adhere to regulatory guidelines



OTHER EQUIPMENT REPAIRS INCLUDE:

IV Poles

Mayo Stands

Shelving

Stainless Steel
Tables

Any stainless steel
equipment with latches,
hinges and casters

We can clean, lubricate
or replace casters, as
well as perform tack/
spot or extensive welds.

CLEAN/DIRTY INDICATORS

Visible indicators communicate the status of a case cart's contents. Clean/Dirty indicators are now a regulatory requirement. STERIS IMS has solution options to help achieve compliance.



CMS Guideline 482.41(c)(2) Facilities, Supplies, Equipment Maintenance

You are expected to maintain
equipment inventories and
documentation of maintenance
activities.

A preventive maintenance program will help minimize the severity of necessary repairs and can reduce future repair costs.

CONTACT US TODAY TO LEARN MORE.

Case Cart Repair

Service and Maintenance to Protect Your Equipment

Replacement of broken
or missing parts

Aligning hinges and
adjusting doors

Repair damaged welds

Lubricating and
re-welding of latches,
hinges, and casters

Inspecting, cleaning,
lubricating, and
replacement of locking
mechanism for casters





Service, augment, and replace your



CASE CARTS

LINEN
HAMPER

MAYO
STANDS

SOLUTION
STANDS

IV STANDS

STEP
STOOLS

A preventive maintenance program will help minimize the severity of necessary repairs and can reduce future repair costs.

CONTACT US TODAY TO LEARN MORE.

rolling stock inventory with



TABLES AND CARTS

**KICK
BUCKETS**

**UTILITY
CARTS**

Replacement Options

STERIS IMS is able to provide high quality medical equipment. Partner with us as you expand or as you replace existing inventory.

Offerings include:

SPD Workstations

Case Carts

Utility Carts

IV Poles

Instrument Tables

Work Tables

Back Tables

Central Supply Tables

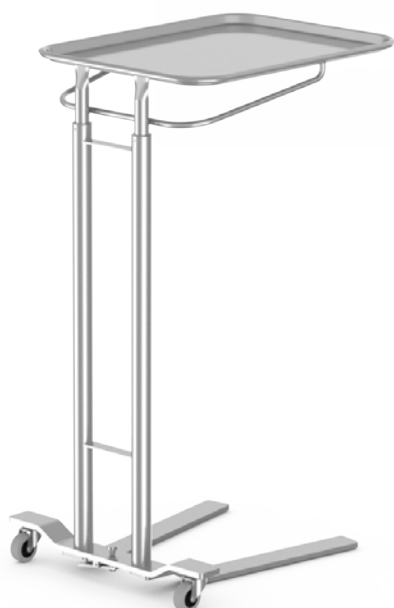
Solution Stands

Kick Buckets

Linen Hampers

Step Stools

Mayo Stands



CONTACT YOUR STERIS IMS ACCOUNT MANAGER FOR ANY ADDITIONAL ITEMS YOU MAY NEED

Case Carts

Basic Models and Features

Each Case Cart provided by STERIS IMS can be custom built to meet user specifications. All case-carts are constructed of fully-welded stainless steel with bolt-on features.



Model #	Overall Dimensions			Inner Dimensions			# of Doors
	D	W	H	D	W	H	
11104CRT001	32.625"	34"	56.375"	28.5"	28.5"	47.25"	1
11104CRT002	26.875"	45.75"	39.625"	25"	40.25"	32"	2
11104CRT003	26.875"	45.75"	54.625"	25"	40.25"	47"	2
11104CRT004	29.125"	41.75"	56.375"	25"	36"	47.25"	2
11104CRT005	26.875"	29.125"	39.625"	25"	23.625"	32"	1
11104CRT006	28.125"	41.75"	53.625"	25"	36"	44.5"	2
11104CRT007	28.125"	28.75"	37.625"	25"	23.25"	28.5"	1
11104CRT008	26.875"	29.125"	54.625"	25"	23.625"	47"	1
11104CRT009	26.875"	41.5"	39.625"	25"	36"	32"	2
11104CRT010	27.75"	52"	39.625"	25.875"	46.5"	32"	2

How to order

Step 1

SELECT BASE MODEL

Choose the base model cart that meets your needs, looking at two primary measurements.

- **External dimensions** – Where will your cart be traveling? Will it fit in every elevator, cart washer, and room door along the path?
- **Internal dimensions** – what size trays need to fit in this cart? How many trays do you want in each cart?



Step 2

SELECT SHELF OPTIONS

Choose the type and # of shelves and the shelf configuration – all shelves are adjustable within the cart.

- **Perforated stainless steel** – Roll Out or Non Roll Out
- **Solid stainless steel** – Roll Out or Non Roll Out



Step 3

SELECT OPTIONAL FEATURES



STAINLESS STEEL SHELF



PERFORATED STAINLESS STEEL SHELF

Maintenance program options are available through STERIS IMS.
Contact your Account Manager for more information.



11104CRTAC028



11104CRTAC012



11104CRTAC029



11104CRTAC030

Step 4 SELECT ACCESSORIES

Indicators

- Clean/Dirty indicators come in slide or wheel form
- Add a flag system to your cart to quickly identify for work-flow

Doors

- Glass doors are an option to allow quick visual inspection of cart contents

Side Extensions

- Install side extensions to increase the workspace available on the cart

Casters

- Additional caster types are available upon request

Custom Carts

- Additional sizes and styles are available if a base model does not meet your facility's needs; reach out to your STERIS IMS Account Manager today about custom options

Work with your Account Manager using
our Case Cart Builder Tool and Tray Loader
Tool to pick the right cart for you!



Back Tables

We offer a variety of instrument and space saver tables for instrument storage in the operating room. Available in standard and space saver options. Both options feature fully welded stainless steel construction and under shelf standard.

Optional Features- Space Saver Tables

Optional Features - Space Saver
Manual Adjustable Height (36"-55")
Electronic Adjustable Height (36"-54")

Optional Features- Back Tables

3" Swivel Caster
Locking Caster
Drawers
Guard Rails on 3 sides (top)
Guard Rails on 3 sides (bottom)
Guard Rails on 4 sides (top)
Guard Rails on 4 sides (bottom)
H or U brace instead of lower shelf
Side Extensions
1" lip on back
Multiple under Shelves

Space Saver Tables

Part #	Depth	Width	Height
11104SST001	30"	60"	36"
11104SST002	30"	72"	36"

Back Tables

Part #	Depth	Width	Height
11104IT001	16"	20"	34"
11104IT002	16"	30"	34"
11104IT003	24"	36"	34"
11104IT004	24"	48"	34"
11104IT005	24"	60"	34"
11104IT006	24"	72"	34"
11104IT007	20"	48"	34"

11104SST002



11104IT018



11104IT032



A preventive maintenance program will help minimize the severity of necessary repairs and can reduce future repair costs.

CONTACT US TODAY TO LEARN MORE.

SPD Tables

CSD Tables

CSD tables, or blue wrap tables, are fully welded stainless steel and come with 5" casters standard (2 swivel and 2 locking). Optional drawers and storage bins can be added to any CSD table.

Work Tables

Work tables come with 5" casters and 1 under shelf standard. Optional features include: drawers, guard rails, extra shelves, and electronic/manual height adjustment.

Nested Tables

The nested tables are built with storage in mind. They are made with fully welded stainless steel, and can "nest" to store in a minimal footprint.



11104ST002



11104WT004

CSD Tables

Part #	Depth	Width	Height
11104ST001	32"	60"	34"
11104ST002	24"	72"	34"
11104ST003	36"	84"	34"

Work Tables

Part #	Depth	Width	Height
11104WT001	24"	36"	34"
11104WT002	24"	48"	34"
11104WT003	24"	60"	34"
11104WT004	30"	72"	34"
11104WT005	36"	72"	34"
11104WT006	30"	60"	34"

Nested Tables

Part #	Depth	Width	Height
11104NT002	24"	48"	42"
11104NT003	22"	44"	40"
11104NT004	20"	40"	38"
11104NT005	18"	36"	36"
11104NT006	16"	32"	34"
11104NT007	14"	28"	32"
11104NT001	Full Set of 6		



11104NT001

Utility Tables

Adjustable Over-Operating Tables

Adjustable Over-Operating Tables

When more table-top workspace is needed than a mayo tray can provide, adjustable tables are an excellent solution. These tables come with manual height adjustment (36.5"-48.25") standard and have the option of adding a back lip to the table.

Utility Tables

Utility tables are the perfect addition to space-strapped work areas, providing a mobile work surface with internal storage options. Each utility table comes with one under shelf and top guard rail standard.

11104UT007



Adjustable Over-Operating Tables

Part #	Depth	Width	Height
11104OT001	34"	42"	36.5"
11104OT002	48"	24"	36.5"
11104OT003	60"	24"	36.5"

Utility Tables

Part #	Depth	Width	Height	# of Drawers
11104UT001	16"	20"	34"	1
11104UT002	16"	20"	34"	2
11104UT003	16"	20"	34"	3
11104UT004	16"	20"	34"	4
11104UT005	18"	33"	34"	1
11104UT006	18"	33"	34"	2
11104UT007	18"	33"	34"	3

Mobile Medical Carts

STERIS IMS is proud to offer a new line of carts for use throughout your facility with our Mobile Medical carts. Highly customizable, these carts offer a variety of storage and organizational solutions for every area in your facility.

Standard features for all Mobile Carts

- 1.25" wrap around bumper
- Storage panels allowing organization of trays and baskets either horizontally or diagonally
- Vinyl anti/roll tops on shorter models
- Magnetic catches on solid and glass doors



Mobile Medical Carts - How to Order

Step 1

Choose Your Cart Size

Where will you store your cart? Where will it need to go? Make sure you pick a cart that will meet your facility/area need.

Cart Name	Exterior Dimensions			Interior Dimensions			# of Compartments
	W	D	H	W	D	H	
Short-Wide	57.875"	23.75"	36"	53.875"	18.625"	29.875"	2
Short-Medium	40.5"	31.125"	36"	36.5"	26.5"	29.875"	2
Short-Narrow	23.375"	31.125"	36"	18"	26.5"	29.875"	1
Tall-Wide	57.875"	23.75"	78"	53.875"	18.625"	71.875"	2
Tall-Medium	40.5"	31.125"	78"	36.5"	26.5"	71.875"	2
Tall-Narrow	23.375"	31.125"	78"	18"	26.5"	71.875"	1



Step 2

Choose Your Cart Composition

Carts come in 3 material styles

- **White or Gray Laminate** – .75" thick high density engineered wood
- **Aluminum Laminate** – Brushed aluminum high pressure laminate
- **Stainless Steel** – fully welded, corrosion resistant, heavy-duty 304 stainless steel



White or Gray Laminate



Aluminum Laminate



Stainless Steel

Door style

- **Solid doors** – comes with magnetic catch
- **Glass doors** – for accessibility in seeing cart contents without opening the door; comes with magnetic catch
- **Roll-up tambour doors** – the door for these carts rolls up into the cart – saving space and eliminating the need to account for the space a hinged door would take up when open



Door handle

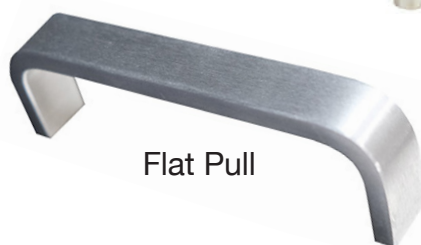
- Wire Pull
- Antimicrobial Copper Pull
- Flat Pull
- Bow Pull



Wire Pull



Antimicrobial Copper Pull



Flat Pull



Bow Pull

Mobile Medical Carts - How to Order

Step 3

Choose Your Interior Accessories

Narrow and Medium Style Carts				
Tray Number	Tray Description	Dimensions	Tray Dividers	
11104MDC001	5cm deep tray	15.75"W x 23.625"L x 2" D	Short Divider	11104MDC007
			Long Divider	11104MDC008
11104MDC002	10cm deep tray	15.75"W x 23.625"L x 4" D	Short Divider	11104MDC010
			Long Divider	11104MDC011
11104MDC003	20cm deep tray	15.75"W x 23.625"L x 7.88" D	Short Divider	11104MDC012
			Long Divider	11104MDC013
11104MDC004	10cm deep tray no dividers	15.75"W x 23.625"L x 4" D	No Dividers	
11104MDC005	10cm deep basket	15.75"W x 23.625"L x 4" D	Short Divider	11104MDC010
			Long Divider	11104MDC011
11104MDC006	20cm deep basket	15.75"W x 23.625"L x 7.88" D	Short Divider	11104MDC012
			Long Divider	11104MDC013

Wide Style Carts				
Tray Number	Tray Description	Dimensions	Tray Dividers	
11104MDC001	5cm deep tray	23.625"W x 15.75"L x 2" D	Short Divider	11104MDC007
			Long Divider	11104MDC008
11104MDC002	10cm deep tray	23.625"W x 15.75"L x 4" D	Short Divider	11104MDC010
			Long Divider	11104MDC011
11104MDC003	20cm deep tray	23.625"W x 15.75"L x 7.88" D	Short Divider	11104MDC012
			Long Divider	11104MDC013
11104MDC004	10cm deep tray no dividers	23.625"W x 15.75"L x 4" D	No Dividers	
11104MDC005	10cm deep basket	23.625"W x 15.75"L x 4" D	Short Divider	11104MDC010
			Long Divider	11104MDC011
11104MDC006	20cm deep basket	23.625"W x 15.75"L x 7.88" D	Short Divider	11104MDC012
			Long Divider	11104MDC013

Trays can be oriented either diagonally or horizontally in all of the mobile carts



Step 4

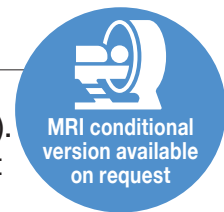
Choose Your Optional Accessories

- **5th Wheel** – For wide carts, a 5th wheel in the center of the cart can be added to improve stability, longevity, and maneuverability
- **Locks** – for added security of your items, all doors can be fitted with a lock
 - Cam lock
 - Digital e-lock
- **Slide out catheter racks** – hanging catheter racks can be added to all cart types



Slide Out Catheter Racks

Mayo Tables



All our Mayo tables are made of stainless steel and are height adjustable (36"-58"). They come in single or dual post configure and are available in 3 different height adjustment mechanics.



Part #	Tray Size	Height Adjustment	Post Configuration	Weight Capacity
11104MYO001	21.25" x 16.25"	Foot Operated Friction Lock	Dual Post	50 lbs
11104MYO003	19.125" x 12.625"	Foot Operated Friction Lock	Dual Post	50 lbs
11104MYO005	25" x 20"	Foot Operated Friction Lock	Dual Post	50 lbs
11104MYO007	21.25" x 16.25"	Hand Operated Friction Lock	Dual Post	50 lbs
11104MYO009	19.125" x 12.625"	Hand Operated Friction Lock	Dual Post	50 lbs
11104MYO011	25" x 20"	Hand Operated Friction Lock	Dual Post	50 lbs
11104MYO013	21.25" x 16.25"	Manual Knob Operated Adjustment	Single Post	40 lbs
11104MYO015	19.125" x 12.625"	Manual Knob Operated Adjustment	Single Post	40 lbs
11104MYO017	21.25" x 16.25"	Foot Operated Friction Lock	Single Post	40 lbs
11104MYO019	19.125" x 12.625"	Foot Operated Friction Lock	Single Post	40 lbs

A preventive maintenance program will help minimize the severity of necessary repairs and can reduce future repair costs.

CONTACT US TODAY TO LEARN MORE.

IV Poles

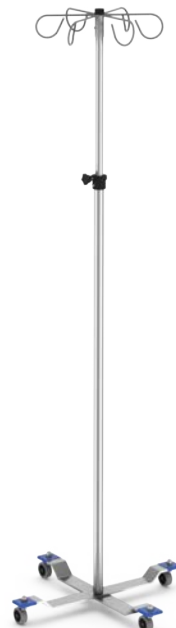
Our IV poles are made of stainless steel. We offer 4-6 leg tip-resistant bases, as well as 2-6 hooks. The poles have a weight capacity of 65lbs (10lbs per hook) and are height adjustable (68"-108").



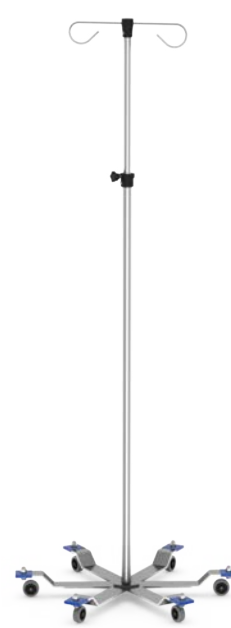
11104IV025



11104IV011



11104IV015



11104IV016

Part #	# of Legs	Height Adjustment	# of	Misc
11104IV007	5-Leg Stand	Foot Operated	2	Welded Base
11104IV008	5-Leg Stand	Foot Operated	4	Welded Base
11104IV009	5-Leg Stand	Foot Operated	6	Welded Base
11104IV010	4-Leg Stand	Foot Operated	2	Welded Base
11104IV011	4-Leg Stand	Foot Operated	4	Welded Base
11104IV012	4-Leg Stand	Foot Operated	6	Welded Base
11104IV013	4-Leg Stand	Hand Operated	2	Knock-Down Version - Assembly Required
11104IV014	4-Leg Stand	Hand Operated	4	Knock-Down Version - Assembly Required
11104IV015	4-Leg Stand	Hand Operated	6	Knock-Down Version - Assembly Required
11104IV016	6-Leg Stand	Hand Operated	2	Knock-Down Version - Assembly Required
11104IV017	6-Leg Stand	Hand Operated	4	Knock-Down Version - Assembly Required
11104IV018	6-Leg Stand	Hand Operated	6	Knock-Down Version - Assembly Required
11104IV019	5-Leg Stand	Hand Operated	2	Knock-Down Version - Assembly Required
11104IV020	5-Leg Stand	Hand Operated	4	Knock-Down Version - Assembly Required
11104IV021	5-Leg Stand	Hand Operated	6	Knock-Down Version - Assembly Required
11104IV025	5-Leg Stand	Fixed Height	2	Triage Solutions

Linen Hampers

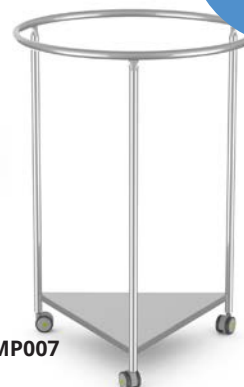
Constructed of fully welded stainless steel, these linen hampers come in a variety of sizes to meet your facility's needs. Stainless steel foot-operated lids and rotating caster bumper guards available as options.



11104HMP003



11104HMP007



MRI conditional
version available
on request

Part #	Dimensions	Shape	Bag Size
11104HMP001	35"H x 57.25"W	Triangle	Accommodates 18" bags
11104HMP003	35"H x 78.625"W	Triangle	Accommodates 25" bags
11104HMP005	35"H x 18"W	Circle	Accommodates 18" bags
11104HMP007	35"H x 25"W	Circle	Accommodates 25" bags

Solutions Stands

Single and double basin designs are available for these fully welded stainless steel basin stands.



11104SOL001



11104SOL006



MRI conditional
version available
on request

Part #	Dimensions	Basin Size	# of Basins	Lower shelf
11104SOL001	14"D x 14"W x 34"H	7 Quart	1	No
11104SOL003	14"D x 14"W x 34"H	9.5 Quart	1	No
11104SOL002	14"D x 14"W x 34"H	7 Quart	1	Yes
11104SOL004	14"D x 14"W x 34"H	9.5 Quart	1	Yes
11104SOL005	14"D x 28"W x 34"H	7 Quart	1	No
11104SOL007	14"D x 28"W x 34"H	9.5 Quart	1	No
11104SOL006	14"D x 28"W x 34"H	7 Quart	1	Yes
11104SOL008	14"D x 28"W x 34"H	9.5 Quart	1	Yes

Kick Buckets

Available in 2 sizes – 13 quart and 9.5 quart. Stainless steel construction.



Step Stools

Heavy duty, tip resistant step stool. Can connect together to create an adjustable platform. Optional storage cart can hold up to five step stools.



A preventive maintenance program will help minimize the severity of necessary repairs and can reduce future repair costs.

CONTACT US TODAY TO LEARN MORE.

SPD Workstation Builder

Build the perfect workstation for your facility with STERIS IMS. Choose from one of four base models and configure to what your workstation needs. Each work station is 100% stainless steel and features integrated footrests and 5" casters.



Work with your Account Manager using our SPD Workstation Builder Tool to pick the right SPD Station for you!

Select base model

Step 1 – choose the base model workstation that meets your needs, looking at two primary measurements

- **Workstation Depth** – choose from a working depth of 32.25" or 38.25"
- **Workstation Width** – choose between 60" and 72" width

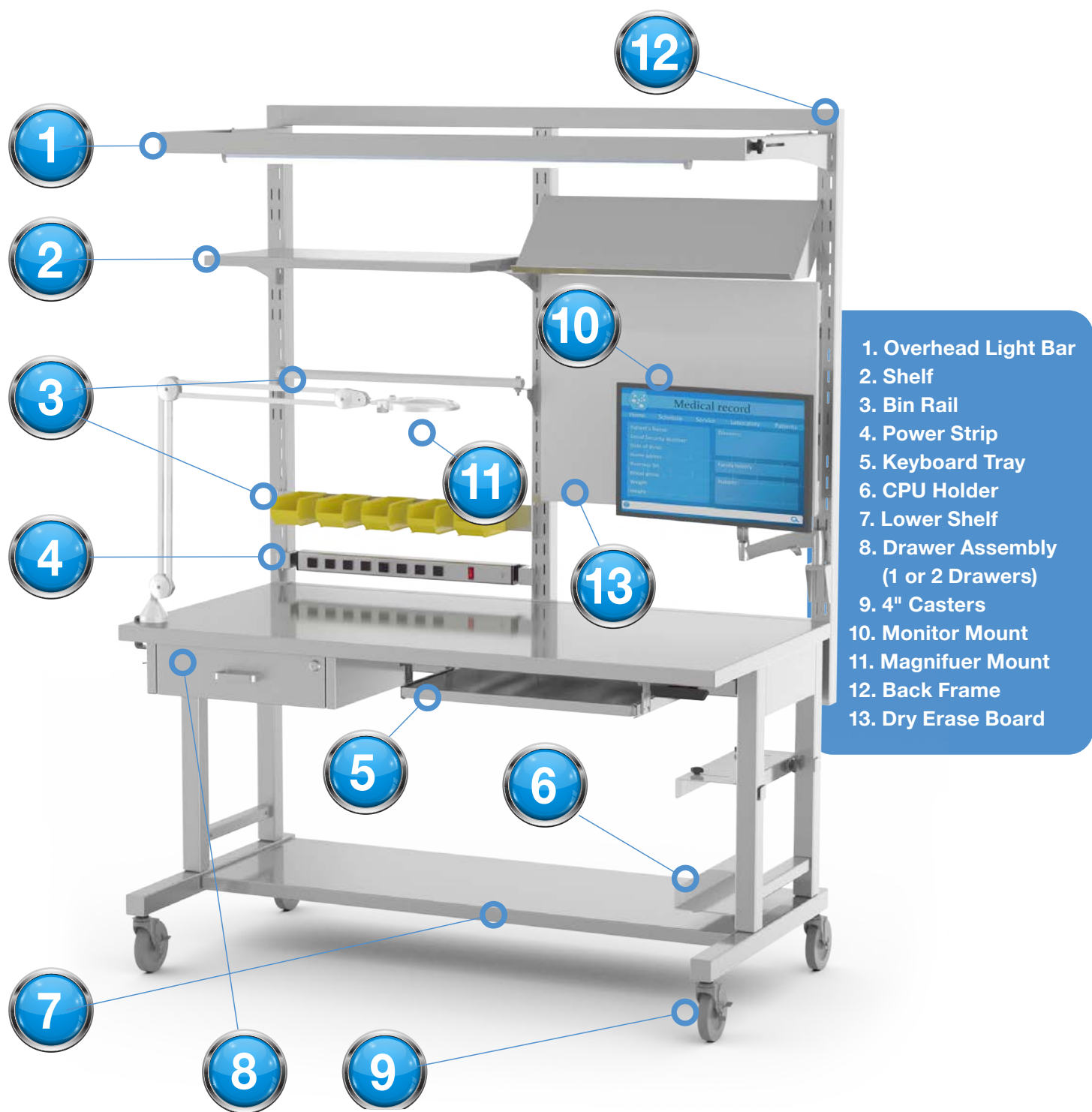
Select optional features

- **Height adjustment**
Electronic or Manual
- **Overhead Light**
- **Bin rail and bins for rail**
- **Electrical Strip**
- **CPU Holder**
- **Keyboard Tray**
- **Adjustable shelf**
Flat or 45 degree angled shelf
- **Spool Holder**
- **Drawer boxes**
Single or Double Box
- **Articulating Magnification Light**
- **Magnetic Dry Erase Board**



**Looking to outfit your new SPD Workstation?
Consult our Accessories catalog**

Prep and Pack Table Components List



A preventive maintenance program will help minimize the severity of necessary repairs and can reduce future repair costs.

CONTACT US TODAY TO LEARN MORE.

Instrument Storage

Pegboards

Stainless steel pegboards come in a variety of pre-cut shapes. The holes are 9/32" and are universal to allow horizontal and vertical hanging (mounting hardware not included).

Pegboards

Part #	Width	Height
11104PG001	24"	36"
11104PG002	36"	36"
11104PG003	36"	48"
11104PG004	42"	48"
11104PG005	48"	48"
11104PG006	48"	72"
11104PG007	48"	96"

Pegs

Part #	Length	Fits Holes
11104PG009	3 3/32"	3/16" & 1/4"
11104PG010	5 3/16"	3/16" & 1/4"
11104PG011	8 3/4"	3/16" & 1/4"
11104PG008	8"	1/4"
11104PG011	9"	1/4"



Lacking wall space? Contact your Account Manager to discuss mobile instrument storage solutions

